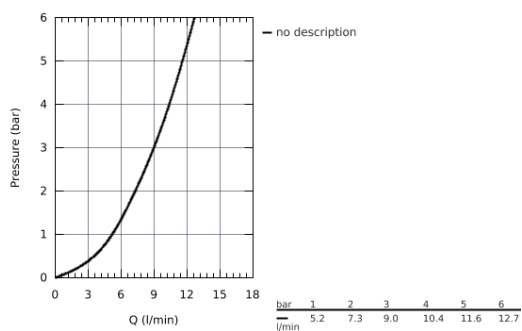
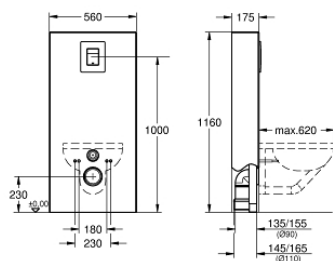


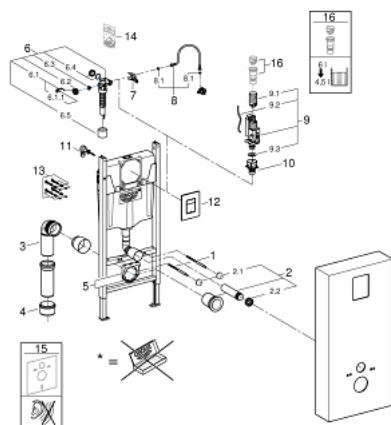
39 377 LS0 **SOLIDO MONOBLOC**



PRODUCT DESCRIPTION

- **1.13 m finished installation height**
- for against-the-wall installations
- powder coated steel frame, self-supporting
- quick adjustment, lockable
- fixing material
- 2 WC fixing bolts
- fixing device for ceramic
- distance of fixing bolts 180/230 mm
- depth adjustable
- inlet and outlet connecting set
- flushing cistern GD 2, 6 - 3 l
- factory set 6 l and 3 l
- pneumatic discharge valve offering 2 modes of operation: dual flush or start/stop
- water supply from left/right or back
- low noise (group I acc. to German Noise Specification)
- insulated against condensation
- ½" water supply connection including integrated angle valve and push fit flexible hose union
- no tools required for the installation of the inspection shaft including protection during construction phase
- for vertical use
- with fixing material
- including acrylic cover
- white
- **Skate Cosmopolitan flush plate**
- chrome

39 377 LS0 **SOLIDO MONOBLOC**



SPARE PARTS

- 1: Threaded bolt (Order-nr. 4276400M)
- 2: WC inlet and outlet connecting set (Order-nr. 37311K00)
- 3: PP-outlet bend Ø 90 mm (Order-nr. 42327000)
- 4: 4" outlet adaptor for Rapid SL (Order-nr. 42242000)
- 5: Support for outlet bend (Order-nr. 42243000)
- 6: Filling valve (Order-nr. 37095000)
- 7: Support device (Order-nr. 42246000)
- 8: Connecting hose (Order-nr. 42233000)
- 9: Dual Flush discharge valve AV1 (Order-nr. 42320000)
- 10: Valve seat for GD2 (Order-nr. 42315000)
- 11: Front wall brackets (Order-nr. 3855800M)
- 12: Top plate with push button (Order-nr. 42371000)
- 13: Fixing set (Order-nr. 4215800M)
- 14: Set of seals (Order-nr. 43722000)*
- 15: Set for noise protection (Order-nr. 37131000)*
- 16: 4.5 l adapter for GD2 (Order-nr. 42333000)*

*Special accessories