

# PHILIPS

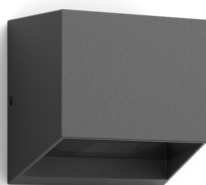
Alix Wall Lights  
4.3W

Ultra Efficient

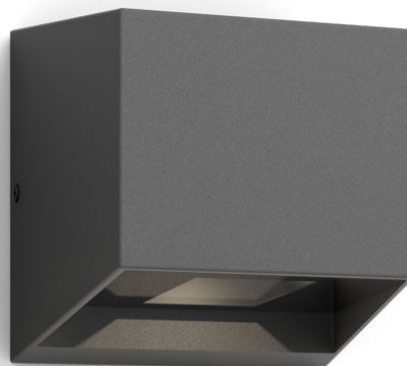
2700K

Anthracite

Water Resistant



8720169351318



## Our most energy-efficient LED lights yet

Philips Alix Ultra Efficient outdoor lights use groundbreaking new technology to cut carbon emissions, reduce material waste and lower energy usage. With an amazing lifetime of 50,000 hours, these lights last more than twice as long as Philips LED outdoor equivalents, and use 50% less energy – just the thing for a more sustainable planet.

### Sustainable light solutions

- Long lifetime up to 50,000 hours
- Ultra Efficient

### Advanced LED light

- 5-year warranty on LED system

### Premium quality

- High-quality aluminium and superior synthetics
- Durable design with PowerShield coating

### Designed for outdoors

- IP44 – weatherproof

### Special characteristics

- Bi-directional light effect

8720169351318

**High-quality light**

- Warm white light 2,700 K

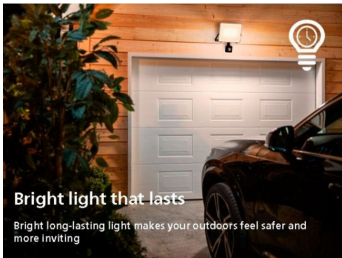
# Highlights

## Long lifetime up to 50,000 hours



Reliable high-quality LED light lasts up to 50,000 hours. You can rest easy knowing that you won't have to worry about maintenance for years, while enjoying the perfect garden light every night.

## Ultra Efficient



Consumes at least 50% less energy compared to equivalent standard LED lights from Philips.

## 5-year warranty on LED system



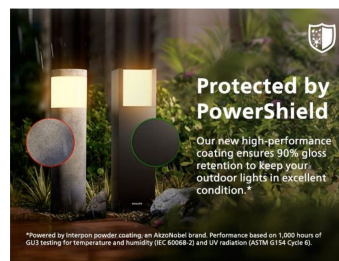
In addition to the standard 2-year warranty offered for this luminaire, Philips also offers a 5-year warranty on the LED system (the LED module and driver).

## High-quality aluminium and superior synthetics



This Philips light is made specifically for outdoor spaces. It's hard-wearing and built to last, so it will light up your garden night after night. It's constructed from high quality die-cast aluminium and superior synthetics.

## Durable design



Protected by PowerShield To keep your outdoor lights in excellent condition, we use a high-performance powder coating powered by Interpon, an AkzoNobel brand. Tougher than traditional paints, it protects against fading, scratches, dents and rust for long-lasting beauty and performance.

## IP44 – weatherproof

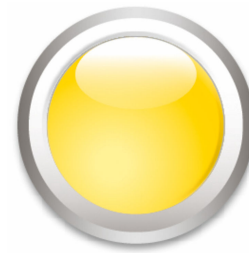


This Philips outdoor light is especially designed for humid outdoor environments and has been tested rigorously to ensure water resistance. Its IP44 rating means that it has been certified to offer ingress protection against dust and splashing water – perfect for general outdoor use.

## Bi-directional light effect

This Philips outdoor luminaire creates the perfect ambience in your garden or terrace with its bi-directional light effect.

## Warm white light 2,700 K



Did you know that different shades of white light are identified by different colour temperatures, measured in Kelvin (K)? Lower colour temperatures produce a warm, cosy white light, while higher colour temperatures produce a cool, more energising white light. This luminaire produces warm, relaxing light at 2,700 K.

# Specifications

## Design and finishing

- Colour: Anthracite
- Material: Aluminium

## Durability

- Nominal lifetime: 50,000 h

## Environmental

- Disposal of the product: At the end of (economic) life, dispose of the product in accordance with local rules. Do not dispose of the product with regular household waste. The correct disposal of your product will help to prevent potential negative consequences for the environment and human health.

## Extra feature/accessory incl.

- 5 year warranty on the LED module: Yes
- Adjustable spot head: No
- Anti-rust anti-dust: Yes
- Bi-directional light beams: Yes
- Day-and-night sensor: No
- Fully weatherproof: Yes
- LED integrated: Yes
- Motion sensor: No
- Solar Energy: No
- Centrepiece: No

## Light characteristics

- Colour rendering index (CRI): 80

## Miscellaneous

- Especially designed for: Garden and Patio
- Style: Contemporary
- Type: Wall Lights
- EyeComfort: No
- LED innovations: UltraEfficient
- Extra Features: Water Resistant

## Power consumption

- Wattage: 4.3 W

## Product dimensions and weight

- Net weight: 0.63 kg
- Height: 10 cm
- Length: 10 cm
- Width: 10 cm

## Service

- Warranty: 5 year(s)

## Technical specifications

- Total lumen output fixture: 800
- Light colour: 2700
- Mains power: AC 220-240
- Fixture dimmable: No
- Energy class included light source: B
- IP code: IP44
- Class of protection: Class I
- Light source replaceable: No

## Packaging dimensions and weight

- EAN/UPC – product: 8720169351318
- Net weight: 0.63 kg
- Gross weight: 0.67 kg
- Height: 12.3 cm
- Length: 11.6 cm
- Width: 11.6 cm



Issue date: 2025-05-01  
Version: 0.283

© 2025 Signify Holding. All rights reserved. Signify does not give any representation or warranty as to the accuracy or completeness of the information included herein and shall not be liable for any action in reliance thereon. The information presented in this document is not intended as any commercial offer and does not form part of any quotation or contract, unless otherwise agreed by Signify. Philips and the Philips Shield Emblem are registered trademarks of Koninklijke Philips N.V.

[www.lighting.philips.com](http://www.lighting.philips.com)