

# enox.<sup>®</sup>

## Enjoy Life

*For a Better Home, Series 2021-2022*

# Tumble Dryer

## OWNER'S MANUAL

# DR8



Read all instructions and explanations before use.  
Follow the instructions carefully.  
Keep the operation instructions handy for later use.  
If the appliance is sold or passed on then ensure  
that the new owner always receives these operation  
instructions.

Manufactured in P.R.C.  
according to the High German Quality Standards of ENOX  
Production Services GmbH, Hamburg/Germany

# CONTENTS

---

## SAFETY INSTRUCTIONS

■ Safety Instructions .....	2
-----------------------------	---

## INSTALLATION

■ Product Description .....	9
■ Installation .....	9

## OPERATION

■ Quick Start .....	12
■ Before each Drying .....	13
■ Control Panel .....	15
■ Option.....	16
■ Drying Programmes Table .....	20

## MAINTENANCE

■ Cleaning and Care .....	22
■ Trouble Shooting .....	23
■ Technical Specifications .....	25
■ Product Fiches.....	26

# SAFETY INSTRUCTIONS

---

## ■ Safety Instructions

### Warning!

To prevent any damages to your and others' life or property, you have to follow the safety notes.

## Intended use

- This dryer is intended for drying typical amounts of household laundry, which have been washed with water. It has been designed solely for private use and is not suitable for commercial or shared use (i.e. by several families in an apartment building).
- Use this appliance only as described in this user manual.
- This appliance is for indoor use only.
- Any other use is deemed improper and may result in damage to property or even personal injury.
- The manufacturer accepts no liability for damage caused by improper use.

## Safety Instructions

- The appliance corresponds to protection class I and may only be connected to a plug with a protective conductor that has been installed properly. When connecting the appliance to the mains, make sure that the mains voltage is correct. You can find more information about this on the rating plate.

# SAFETY INSTRUCTIONS

---

- The electrical safety of this tumble dryer can only be guaranteed when correctly earthed. It is essential that this standard safety requirement is met. If in any doubt, please have the household wiring system tested by a qualified electrician. The manufacturer cannot be held liable for the consequences of an inadequate earthing system (e.g. electric shock).

 Warning!

## Electric shock hazard

- Before connecting the tumble dryer, ensure that the connection parameter on the rating plate (fuse rating, voltage and frequency) match the mains electricity supply. If in any doubt, consult a qualified electrician.
- The electrical safety of this tumble dryer can only be guaranteed when correctly earthed. It is essential that this standard safety requirement is met. If in any doubt, please have the household wiring system tested by a qualified electrician. The manufacturer cannot be held liable for the consequences of an inadequate earthing system (e.g. electric shock).
- Do not pull the power cord forcefully. Please grasp the mains plug instead
- Do not plug/draw the mains plug with wet hands.
- Do not bend, clamp or damage the power cord and the power plug.
- If the power cable is damaged, it must be replaced by the manufacturer, its service agent or similarly qualified persons in order to avoid a hazard.

# SAFETY INSTRUCTIONS

---

- Warning: The appliance must not be supplied through an external switching device, such as a timer, or connected to a circuit that is regularly switched on and off by a utility.
- Do not connect the appliance to the mains electricity supply by an extension lead, multi-socket adapter or similar.
- The accessibility of the plug must always be ensured, in order to disconnect the tumble dryer from the mains.
- If the appliance appear high temperature abnormally, please draw the mail plug immediately.

## Injury danger

- The appliance must not be installed behind a lockable door, a sliding door or a door with a hinge on the opposite side to that of the tumble dryer, in such a way that a full opening of the tumble dryer door is restricted.
- Do not disassemble or install the dryer without any instruction or supervision.
- Do not stack this dryer on washing machine without stacking kits. (If you want to stack this dryer on a washing machine, please purchase the independent parts. Installation shall be done by the manufacturer, its service agent or similarly qualified persons to avoid any hazards.)
- Do not lean on the opened door of the dryer.
- Condensed water is not drinking water. It can cause health problems in both people and animals if consumed.

## Damage danger

- Do not put more load than rated in this user manual. See the related chapter in the user manual.

# SAFETY INSTRUCTIONS

---

- Do not operate the dryer without the lint filter.
- Do not dry the clothes before being spun.
- Do not expose the dryer directly under the sun.
- Do not install the dryer in humid and drenching environment.
- While cleaning and maintenance, please do remember to pull out the power plug and do not directly spray the dryer with water.
- The appliance should not be overturned during normal use or maintenance.

## **Warning!**

### Explosion & Fire danger

- Please do not dry the clothes with any flammable substances such as kerosene or alcohol. Otherwise, there may be explosion.
- The tumble dryer is not to be used if industrial chemicals have been used for cleaning.
- Do not dry unwashed items in the tumble dryer.
- Items that have been soiled with substances such as cooking oil, acetone, alcohol, petrol, kerosene, spot removers, turpentine, waxes and wax removers should be washed in hot water with an extra amount of detergent before being dried in the tumble dryer.

# SAFETY INSTRUCTIONS

---

- Items such as foam rubber (latex foam), shower caps, waterproof textiles, rubber backed articles and clothes or pillows fitted with foam rubber pads should not be dried in the tumble dryer.
- Fabric softeners, or similar products, should be used as specified by the fabric softener instructions.
- Oil-affected items can ignite spontaneously, especially when exposed to heat sources such as in a tumble dryer. The items become warm, causing an oxidation reaction in the oil. Oxidation creates heat. If the heat cannot escape, the items can become hot enough to catch fire. Piling, stacking or storing oil-affected items can prevent heat from escaping and so create a fire hazard.
- Remove all objects from pockets such as lighters and matches.
- If it is unavoidable that fabrics that contain vegetable or cooking oil or have been contaminated by hair care products be placed in a tumble dryer they should first be washed in hot water with extra detergent. This will reduce, but not eliminate, the hazard.
- **WARNING:** Never stop a tumble dryer before the end of the drying cycle unless all items are quickly removed and spread out so that the heat is dissipated.
- Openings must not be obstructed.
- The lint trap has to be cleaned frequently.
- Lint must not to be allowed to accumulate around the tumble dryer.

# SAFETY INSTRUCTIONS

---

## Safety with children

- This appliance can be used by children aged from 8 years and above and persons with reduced physical, sensory or mental capabilities or lack of experience and knowledge if they have been given supervision or instruction concerning use of the appliance in a safe way and understand the hazards involved. Children shall not play with the appliance. Cleaning and user maintenance shall not be done by children without supervision.
- Children should be supervised to ensure that they do not play with the appliance.
- Children of less than 3 years should be kept away unless continuously supervised.
- Always close the door after use. In this way you will avoid the danger of:
  1. Children climbing onto or into the dryer or hiding things in it.
  2. Pets or other small animals climbing into it.



# SAFETY INSTRUCTIONS

---

## Correct Disposal of this product:



This marking indicates that this product should not be disposed with other household wastes throughout the EU. To prevent possible harm to the environment or human health from uncontrolled waste disposal, recycle it responsibly to promote the sustainable reuse of material resources. To return your used device, please use the return and collection systems or contact the retailer where the product was purchased. They can take this product for environmental safe recycling.

## Disposal of packaging material

- The packaging is designed to protect the appliance from damage during transportation. The packaging materials are environmentally friendly and should be recycled. Recycling the packaging can reduce the use of raw materials in the manufacturing process and the amount of waste in landfill sites.

Model	Rated capacity
DR8	8.0kg

# INSTALLATION

## ■ Product Description

Top board

Water container

Power cord

Drum

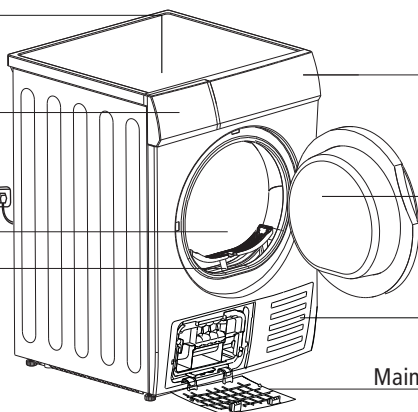
Lint filter

Control panel

Door

Air inlet

Maintenance cover

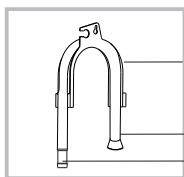


Note: The actual model you purchased might differ. Please see the product you purchased in kind prevail.

## Accessories

The following parts are optional for specific models.

If your dryer has following parts, please wear gloves and install them following the instruction below .



Hose holder(optional)

Condensing drain hose(optional)

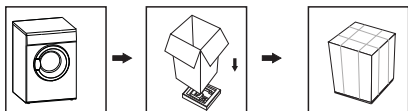
Connector (optional)

Note:

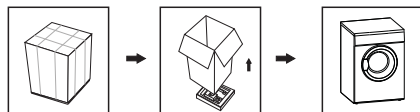
If you own the direct drain set, please remove the connector from the hose to use it. The direct drain hose can be installed directly on this model without use of the connector.

## ■ Installation

### • Packing the dryer machine



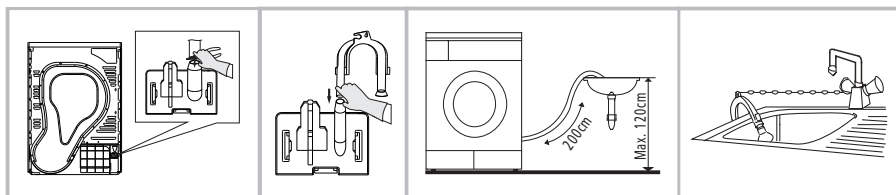
### • Unpacking the dryer machine



### ⚠ Warning!

- Packaging material (e.g. Foils, Styrofoam) can be dangerous for children.
- There is a risk of suffocation! Keep all packaging well away from children.

# INSTALLATION



Use a pliers to remove the drain hose from the hose connector. Insert the external drainage hose.

Put the hose holder in the washing basin or any other sink.

## Transport

Move cautiously. Do not grasp any salient parts of machine. The machine door cannot be used as the handle for transport.

### Risk of injury and damage!

Improper handling of the appliance may result in injury.

- The appliance is very heavy. Never transport or carry the appliance alone; always with the assistance of another person.
- Remove all obstacles on the transport route and from the installation location, e.g. open doors and clear away objects lying on the floor.
- Do not use the open door as a handhold.
- Remove all package material before using the appliance.
- Before setting up the tumble dryer, check it for any externally visible damage. Do not install or use a damaged tumble dryer.
- Do not install the tumble dryer in a room where there is a risk of frost occurring. At temperatures around freezing point the tumble dryer may not be able to operate properly. There is a risk of damage if the condensed water is allowed to freeze in the pump and hoses.

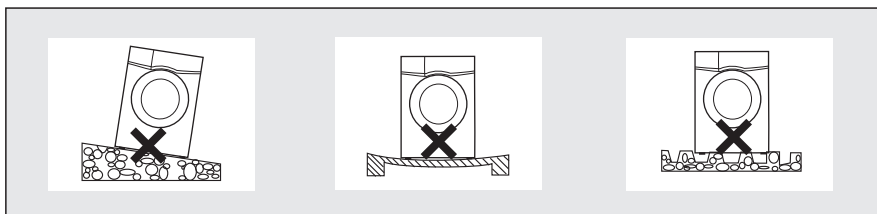
## Installation Position

### ⚠ Warning!

- Children can become entangled in the packaging film or swallow small parts and suffocate. Do not allow children to play with the packaging.
- The appliance must not be installed behind a lockable door, a sliding door or a door with a hinge on the opposite side to that of the tumble dryer, in such a way that a full opening of the tumble dryer door is restricted.

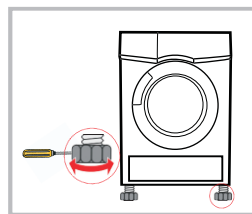
# INSTALLATION

- Do not restrict the floor clearance through deep pile carpets, strips of wood or similar. This might cause heat built-up which would interfere with the operation of the appliance.
1. It is recommended that, for your convenience, the machine is positioned close to your washing machine.
  2. Do not stack this dryer on washing machine without stacking kits. (If you want to stack this dryer on a washing machine, please purchase the independent parts. Installation shall be done by the manufacturer, its service agent or similarly qualified persons to avoid any hazards.)
  3. The tumble dryer must be installed in a clean place, where dirt does not accumulate. Air must be able to circulate freely around the appliance. Do not obstruct the front air inlet or the air intake grilles at the back of the machine.
  4. To keep vibration and noise within minimum level when the dryer is in use, it must be placed on a firm and level surface.
  5. The feet must never be removed.



## Level Adjusting

Once in its permanent operating position, check that the dryer is absolutely level with the aid of a spirit level. If it is not, adjust the feet by hand or using a tool.



## Power Supply Connection

1. Make sure that the voltage of the power supply is the same as the electric specification.
2. Do not connect the dryer with the power connection board, a universal plug or socket, do not use multi-plug adapters and extension cables.

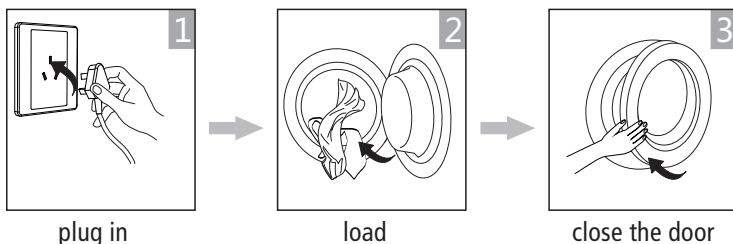
# OPERATION

## ■ Quick Start

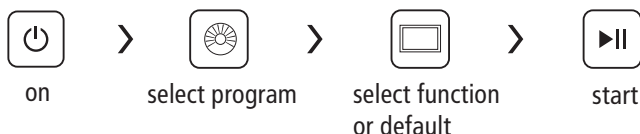
### Note!

Before using, make sure the tumble dryer is installed correctly.

## Before Drying

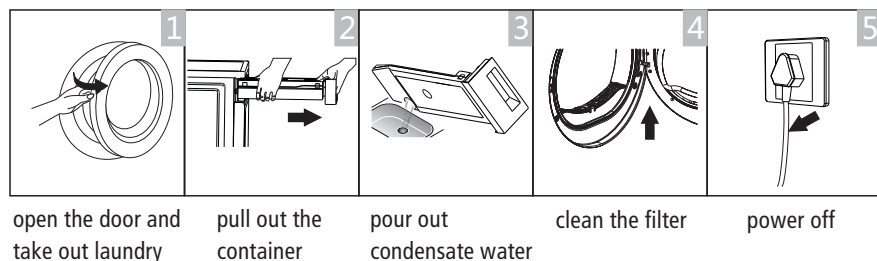


## Drying



## After Drying

Buzzer beep and "0:00" on display.



### Note!

- If the socket with a switch is used, please press the switch to turn off the power directly.

# OPERATION

---

## ■ Before each Drying












### Note!

- Before first use, please use a soft fabric to clean the inside drum.
  1. Put some clean rags into the drum.
  2. Plug the power plug, press **【On/Off】**.
  3. Select the **【Warm】** Programme, press **【Start/Pause】** button.
  4. After finishing this programme, please follow the "cleaning and care " instructions (refer to page 22) to clean the lint filter.
- During drying, the airflow and the pump will generate some noise which is entirely normal.

1. Before drying, thoroughly spin the laundry in washing machine. High spin speed shortens the drying time and saves energy.
2. For uniform drying result, sort the laundry according to fabric type and select the appropriate drying programme.
3. Before drying, please close zips, hooks and eyelets, button, tie fabric belts, etc.
4. Remove all objects from pockets such as lighters and matches.
5. Sew in or remove underwiring from bras.
6. Close duvet covers and pillow cases to prevent small items from being rolled up inside them.
7. Leave jackets open and undo any long zips so that textiles dry evenly.
8. Do not over dry the clothes, because over dried clothes can easily get creases.
9. Do not dry the articles containing rubber or similar elastic materials.
10. Keep the area around the tumble dryer clean. Coal dust or flour may cause an explosion.
11. The door shall be opened only after the programme of the tumble dryer is finished to avoid being scalded by hot steam or over heated drying machine.
12. Clean the lint filter and empty water container after each use to avoid extension of drying time and increase of energy consumption.
13. Do not dry clothes after dry-clean process.

# OPERATION

The reference weight of dry clothes (weight per item)

 Sweater (mixed 800g)	 Jacket ( cotton 800g )	 Jeans (800g)	 Bath Towel (cotton 900g )
 Single bedsheet (cotton 600g )	 Work clothes ( 1120g)	 Pyjamas ( 200g)	 Shirt (cotton 300g )
 T-Shirt (cotton 180g )	 Underwear (cotton 70g )	 Socks (mixed-weave 50g )	

## Note!

- Do not put more load than rated.
- Do not dry dripping wet laundry. The dryer might get damaged

Only dry laundry suitable for tumble drying. Regard the laundry care labels:



Suitable for tumble drying



Normal drying process: Drying in the tumbler is possible under normal load and temperature 80°.



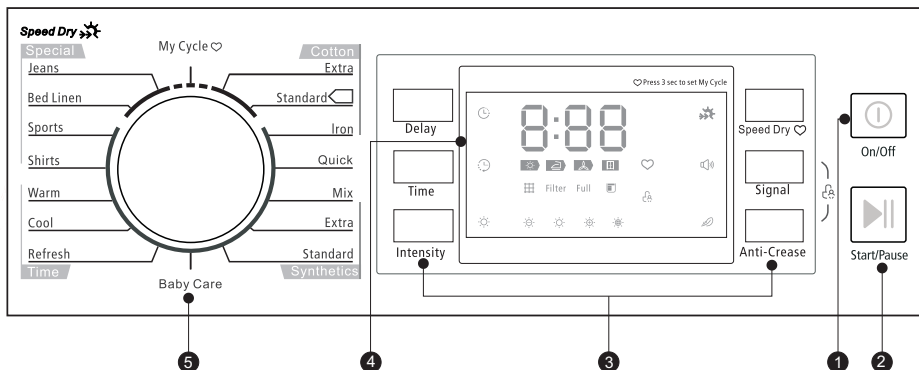
Mild drying process: Caution is appropriate when tumble drying. Select mild process with reduced thermal action.



Do not tumble dry: Articles unsuitable for drying in the tumbler.

# OPERATION

## ■ Control Panel



### 1 On/Off

Product is switched on or off.

### 2 Start/Pause

Press the button to start or pause the drying cycle.

### 3 Option

These buttons are used for setting additional functions.

### 4 Display

This display shows the setting, estimated program time remaining and status messages of your dryer.

### 5 Programmes

Different drying cycles can be selected according to the users need and the type of laundry to be dried.



# OPERATION

---

## ■ Option

### Delay

#### Delay

This function is used for delaying the start of the drying programme up to 24 hours. When the delayed programme starts, the time starts to countdown on the display and the delay icon blinks.

1. Load your laundry and make sure the machine door is closed.
  2. Press the **【On/Off】** button, then turn the programme selector knob and select the desired programme.
  3. You can select the **【Anti-Crease】** function according to your need.
  4. Press the **【Delay】** button.
  5. Continue to press **【Delay】** to select the desired delay time.
  6. After the **【Start/Pause】** button is pushed, the dryer is at the run condition. The drying procedure will be automatically performed when the delay time is over.
  7. If you push the **【Start/Pause】** button again, the delay function will be paused.
  8. If you want to cancel the "Delay" function, please press the **【On/Off】** button.
- 

### Time

#### Time

When the **【Warm】** or **【Cool】** or **【Refresh】** programme is selected, the **【Time】** button can be used to adjust the drying time in 10 min. steps.

---

### Intensity

#### Intensity

You can adjust the dryness level of the laundry by pressing the **【Intensity】** button.

1. The intensity function can be activated only before the programme start.
  2. Except the **【cotton iron】**, **【quick】**, **【baby care】**, **【refresh】**, **【cool】**, **【warm】** all the other programmes can be the **【Intensity】** function.
- 

### Speed Dry

#### Speed Dry

Use this option to shorten the drying time. The **【CottonExtra】**, **【Cotton Standard】**, **【Bed linen】** and **【Jeans】** programme can use this function.

---

# OPERATION

---

## Signal

### Signal

Set the buzzer on or off. In default condition, the buzzer is on. Please touch it if needed.

When the buzzer is on:

- 1.The dryer will make the leading sound if press the extra function buttons.
  - 2.If the programme knob is rotated when the dryer is running,the dryer will remind the operator that it is an invalid programme selection.
  - 3.When the drying programme is done, the buzzer will beep to remind the user.
- 

## Anti-Crease

### Anti-Crease

At the end of the drying cycle, the anti-crease time is 30 minutes (default) or 120 minutes (selected).

The **【Anti-Crease】** light will illuminate when the anti-crease function is selected. This function prevents the laundry from creases. The laundry can be removed during the anti-crease phase. Except **【baby care】** , **【refresh】** , **【cool】** all the other programmes provide this function.

---

## My Cycle

### My Cycle

Used to define and save your favourite programme, which is used frequently.

1. Select the desired programme and other drying functions.
  2. Press and hold the **【Time】** button for 3 seconds until the beep sounds and the desired programme has been saved.
  3. Turn the programme selector to the **【My Cycle】** position, then you can start your favorite programme. If you want to change the **【My Cycle】** settings, repeat the steps 1 and 2.
- 

## Child Lock










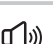


### Child Lock

1. This machine incorporates a special child safety lock, which can prevent children from carelessly pressing buttons or making faulty operation.
  2. When the drying cycle is running, press the **【Anti-Crease】** and **【Signal】** buttons for 3seconds to activate the child lock function.
  3. When child lock function is set, the display will show the child lock icon and all button are deactivated, except **【On/Off】** button.
  - 4.To deactivate the child lock function, the **【Anti-Crease】** and **【Signal】** buttons shall be pressed for 3 seconds.
-

# OPERATION

---

## ■ Display

	Delay
	Time
	Child lock
	Remaining Time indicator/Error message
 Filter	Clean filters (warning)
Full 	Empty water container (warning)
	Intensity
	Cycle phase status
	Speed dry
	Signal
	Anti-Crease
	My Cycle

# OPERATION

---

## ■ Programmes

### Programme selector

1. When the LED display screen brightens up, rotate the programme knob to select the desired programme.
2. Select the **【Delay】** , **【Time】** , **【Speed Dry】** , **【Intensity】** , or **【Anti-Crease】** functions for additional options.
3. Press the **【Start/Pause】** button.
4. Press the **【On/Off】** button after the programme has completed.

### Programme start

The drum will rotate after the programme starts. The remaining programme time will be displayed.

### Programme end

1. The drum will stop rotating after the programme ends. The display will show "0:00". The dryer will start **【Anti-Crease】** function if the user doesn't remove the load. (Refer to page 17).  
Please press **【On/Off】** button after unloading the tumble dryer to cut off power and pull out the plug.
2. Deal with the problems according to "Trouble Shooting" section, if there is an unexpected stop during the drying procedure or the dryer shows an Error Code (Refer to page 24).



### Note!

- During drying, water may collect between the window and the seal. This does not affect the function of your dryer!

# OPERATION

## ■ Drying Programmes Table

Programme		Max Load	Application/Properties	Delay	Time
Cotton	Extra	8.0kg	For single or multi-layer cotton laundry to be dried completely for direct storage.	Y	N
	Standard				
	Iron		For single layer cotton laundry to remain damp for ironing.		
Quick		3.0kg	For washing which is to be dried quickly, eg, made of acrylic fibres or for individual small items. Also for subsequent drying.	Y	N
Mix		3.0kg	For mixed fabrics from cotton and synthetics.	Y	N
Synthetics	Extra	3.5kg	For thick or multi-layer synthetic fabrics to be dried completely .	Y	N
	Standard		To dry thin synthetic textiles, which are not ironed, such as easy care shirts, baby cloths or socks.		
Baby Care		1.0kg	To dry small amount of baby clothing.	Y	N
Special	Jeans	6.0kg	To dry jeans or leisure clothes that are spun at high speed in the washing machine.	Y	N
	Bed Linen	5.0kg	To dry bed linen, bed sheets or other large items.		
	Sports	3.0kg	To dry sportswear and thin fabrics from polyester, which are not ironed.		
	Shirts	3.0kg	For easy care laundry, such as shirts and blouses equipped with anti-crease functionality to minimize the ironing effort. Place clothes loosely in the dryer. Once dried, remove quickly and hang it on a clothes hanger.		
My Cycle		—	Define and save your favourite programme.	Y	—
Time	Warm	—	To dry individual items or complete the drying process of multi-layer fabrics with different drying behavior, such as jackets, pillows or voluminous items. Min 10 min. to max. 120 min. (in 10 min. steps)	Y	Y
	Cool	—	To air items without heating. Min. 10 min to max. 30 min. (in 10 min. steps)		
	Refresh	1.0kg	To refresh clothes kept at closed environment for a long time or to remove odors. Min. 20 min to max. 150 min. (in 10 min. steps)		

### Note!

- □ Test programme in accordance with Regulation 392/2012/EU for energy labelling, measured in accordance with EN 61121 and suitable for drying normal cotton load at rated load capacity.
- Thick or multi-layered fabrics, e.g. bedlinen, jeans, jackets etc, are not easy to dry. You'd better choose Cotton Extra programme.
- As the uneven material, thick and multi-layered clothes are not easy to dry, it is better to choose the appropriate time drying programme to dry them if some parts of the clothes still damp after programme finished.

# OPERATION

## ■ Consumption Data ①

Model	Program	Capacity	Spin Speed / Residual Humidity	Drying Time	Energy Consumption
DR8	Cotton Standard	8kg	1000rpm / 60%	140min	4.74kWh
	Cotton Standard	4.0kg	1000rpm / 60%	90min	2.57kWh
	Synthetic Standard	3.5kg	800rpm / 40%	57min	1.65kWh

### Note!

- Thick or multi-layered fabrics, e.g. jackets etc., are not easy to dry. You had better choose Cotton Extra programme or use "Speed Dry" function.
- As uneven material, thick and multi-layered clothes are not easy to dry, it is better to choose the appropriate time drying programme to completely dry them if some parts of the clothes are still damp after programme finishes.

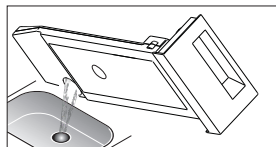
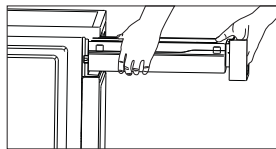
① All data are measured in accordance with EN 61121.  
The actual consumption may differ from the values given in the table, depending on the amount of the laundry, type of fabric, residual moisture and any additional functions selected.

# MAINTENANCE

## ■ Cleaning and Care

### Empty the water container

1. Pull out and hold the water container with two hands.
2. Tilt the water container, pour out the condensate water into the basin.
3. Install the water container.

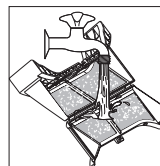
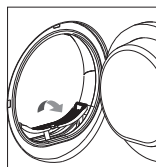


### ⚠ Warning!

- Empty the water container after each use. Once the water container is filled completely, the programme will be paused and the "🚫" icon will light. After the container is emptied, the dryer can be restarted by pressing **【Start/Pause】** button.
- Do not drink the condensate water.
- Do not use the dryer without the water container.

### Clean the lint filter

1. Open the door.
2. Take out the filter.
3. Open the filter and remove the fluff on the filter. You can clean it in water.
4. Dry the filter thoroughly before installing it back.



### 📌 Note!

- The lint accumulated on the filter will block the air circulation, which will cause the extension of drying time and increase energy consumption. Therefore the lint filter shall be cleaned after each use.
- Take notice of the correct orientation before to insert the lint filter.
- Do not operate the dryer without the lint filter!
- Clean the lint filter after each use to prevent lint accumulation inside the dryer.

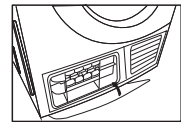
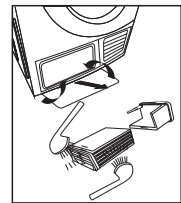
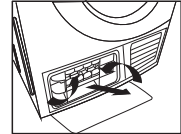
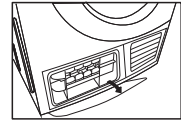
# MAINTENANCE

## Cleaning the heat exchange

Leave the dryer to cool down.

Residual water may leak out, place an absorbent cloth under the maintenance cover.

1. Unlock the maintenance cover.
  2. Completely open maintenance cover.
  3. Turn both locking levers towards each other.
  4. Pull out the heat exchanger.
  5. Flush the heat exchanger with water to remove lint; let the water drain properly.
  6. Clean the seals.
  7. Re-insert the heat exchanger, the handle at the bottom.
  8. Turn both locking levers.
  9. Close the maintenance cover until it locks into position.
- Please clean the heat exchanger approximately, once every 3 months if frequently used.  
Do not damage the heat exchanger!



### Warning!

- Clean with water only; do not use hard/sharp-edged objects!  
Do not operate the dryer without the heat exchanger!

## ■ Trouble Shooting

Many malfunctions and faults that might occur in daily operation can be easily remedied. Time and money will be saved because a service call won't be needed. The following guide may help you to find the reason for a malfunction and correct it.

Display	Reason	Solutions
" E30 "	Heating problem	Please contact your local service center if the problem persists.
" E32 "	Humidity sensor error	
" E33 "	Temperature sensor error	

### Warning!



- Only authorised technicians can carry out repairs.
- If the LED displays other prompt and the dryer does not work, please call the service.



# MAINTENANCE

## Note!

Before you call the service, please check if you have dealt with the problems yourself consulting the user instructions.

Problem	Solution
• Display is not on	<ul style="list-style-type: none"><li>• Check if the power supply works.</li><li>• Check if the mains plug is inserted.</li><li>• Check the selected programme .</li><li>• Press the <b>【On/Off】</b> button.</li></ul>
• “  ” is lighting	<ul style="list-style-type: none"><li>• Empty water container.</li><li>• If the light still remains on, please call the service.</li></ul>
• “  ” is lighting	<ul style="list-style-type: none"><li>• Clean the lint filter.</li></ul>
• Dryer does not start	<ul style="list-style-type: none"><li>• Connect the tumble dryer to the mains.</li><li>• Turn on the tumble dryer.</li><li>• Check the the door is closed.</li><li>• Check the programme is set.</li><li>• Press the <b>【Start/Pause】</b> button.</li></ul>
• Degree of dryness was not reached or drying time too long	<ul style="list-style-type: none"><li>• Clean lint filter and heat exchanger.</li><li>• Empty the water container.</li><li>• Check the drain hose.</li><li>• Check installation place is appropriate.</li><li>• Keep the air inlet clean.</li><li>• Use higher drying intensity level programme or time programme.</li></ul>
• The dryer switches off at the end of the programme	<ul style="list-style-type: none"><li>• The dryer switches off automatically for energy saving. This is not an error but a normal function.</li></ul>

## Warning!

If you cannot deal with the problems by yourself and need help

- Press the **【On/Off】** button.
- Pull out the mains plug and call the service.

# MAINTENANCE

---

## ■ Technical Specifications

Model Parameter	Dr8
Dimension(L*W*H)	615*595*845(mm)
Ambient temperature	+5°C ~ +35°C
Rated input power	2700W
Rated voltage	220-240V~
Rated frequency	50Hz
Weight of product	41kg
Rated capacity	8.0kg

### Note!

- The rated capacity is the maximum capacity, make sure that the dry clothes which are loaded to the appliance do not exceed the rated capacity.
- Do not install the tumble dryer in a room when there is a risk of frost occurring. At temperatures around freezing point the tumble dryer may not be able to operate properly.
- There is a risk of damage if the condensate water is allowed to freeze in the pump, hoses and / or condensate water container.

# MAINTENANCE

Model	DR8
Rated Capacity	8kg
Dryer Type	Condenser
Energy efficiency class	B
Weighted annual energy consumption (AE <sub>c</sub> ) <sup>1</sup>	560.9kWh / year
Automatic or non-automatic	Automatic
EU Ecolabel	N/A
Energy consumption of the standard cotton programme	
Weighted energy consumption of the standard cotton programme at full and partial load	3.50kWh
Energy consumption of the standard cotton programme at full load	4.74kWh
Energy consumption of the standard cotton programme at partial load	2.57kWh
Power consumption of the off-mode (Po)	0.1 W
Power consumption of the left-on mode (Pl)	0.8 W
Duration of the left-on mode	10 min
Programme time of the 'standard cotton programme'	
Weighted programme time of the standard cotton programme at full and partial load	111min
Programme time of the standard cotton programme at full load	140min
Programme time of the standard cotton programme at partial load	90min
Condensation efficiency class A (most efficient) to G (least efficient)	B
Average condensation efficiency of the standard cotton programme at full load	81%
Average condensation efficiency of the standard cotton programme at partial load	81%
Weighted condensation efficiency for the standard cotton programme at full and partial load	81%
Sound power level for the standard cotton programme at full load	69dB

## Remarks:

- Energy consumption per year, based on 160 drying cycles of the standard cotton programme at full and partial load, and the consumption of the low-power modes. Actual energy consumption per cycle will depend on how the appliance is used. The 'standard cotton programme' used at full and partial load is the standard drying programme to which the information in the label and the fiche relates, that this programme is suitable for drying normal wet cotton laundry and that it is the most efficient programme in terms of energy consumption for cotton.

